



2
0
0
7

Environmental
Proficiency Testing
and Quality
Control Standards

Analytical Standards, Incorporated



Dear Colleagues,

Welcome to Analytical Standards, Incorporated (**asi**)! Our goal is to provide the highest quality Proficiency Testing and Quality Control samples with the most responsive and knowledgeable customer service in the industry, all at a very competitive price. Thank you for browsing through our new catalog and letting us demonstrate what **asi** can do for you.

You may already know that **asi** has been a provider of proficiency testing and quality assurance standards for the last 15 years. We have in fact enrolled in the new A2LA accreditation program in order to better assist you in meeting every official requirement for reliability. You can be confident that **asi** will provide you with PT samples and Quality Control materials manufactured to the highest standards. All our products come with a 100% customer satisfaction guarantee.

Throughout the years we have listened to all our business partners, including the state and federal officials that we work closely with. Responding to the constant flow of input in a timely and personalized way has helped us build a reputation as a caring company that accommodates the diverse needs of our customers. We reaffirm our commitment to providing you with the highest quality samples, best technical support and customer service available in the industry. Our friendly and well trained staff will take the time to give you clear explanations about our products and services or to walk you through the testing process. They will also be happy to answer any further questions that you may have concerning orders, PT requirements, or any other issues.

Are you ready to experience the difference? You can order from us with total peace of mind knowing that our well-trained staff is only one phone call away. Happy browsing everyone and see for yourself that **asi** is the number one choice for highest quality samples, reliability, and friendliest customer service.

Warmest Regards,

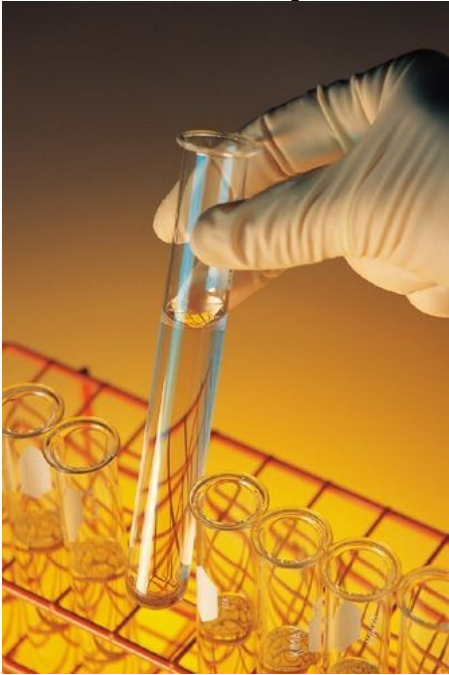
Frederick S. Anderson
President
Analytical Standards, Inc.



TABLE OF CONTENTS

Welcome to Analytical Standards, Incorporated	2
The Environmental Laboratory Program Double Blind PT Standards	3
ELP Standard Specifications	4
ELP Standards Pricing	5
The BenchMark Performance Audit Single Blind PT Standards	6
PT Now Quick Response Standards	6
On Target InstaCheck Quality Control Standards	7
Ready To Use Whole Volume PT and QC Standards	7
Water Pollution (WP) Inorganic Standards Specifications	8
Water Pollution (WP) Inorganic Standards Pricing	9
Water Pollution (WP) Organic Standards Specifications	10
Water Pollution (WP) Organic Standards Pricing	11
Water Supply (WS) Inorganic Standards Specifications	12
Water Supply (WS) Organic Standards Specifications	13
Water Supply (WS) Standards Pricing	14
Microbiology Standards Specifications and Pricing	15
Solid Waste (Soil) Standards Specifications	16
Solid Waste (Soil) Standards Pricing	17
Laboratory Control Standards	18
Contact Us	19
idata Online Data Entry System	19
Ordering Information	20

Welcome to Analytical Standards, Incorporated



In today's environmental market, quality is critical. Analytical Standards, Incorporated (**asi**) offers a total laboratory evaluation program giving the most for your dollar spent. Analytical Standards, Incorporated is a state-of-the-art manufacturer of concentrated and whole volume water pollution (WP) and water supply (WS) and whole volume solid waste quality control standards, and a pioneering provider of both single-blind and double-blind performance evaluation programs. While maintaining high quality products, **asi** delivers superior customer service and competitively priced products with two promises. We guarantee 100% Customer Satisfaction. We also guarantee to beat any quoted competitor's price by at least ten (10%) percent. **asi** offers four major lines in order to

meet all your performance evaluation needs. These lines are:

- The Environmental Laboratory Program
- The BenchMark Performance Audit
- The On Target InstaCheck Standards
- The PT Now Quick Response Standards

The supervision and monitoring of contract laboratories is a complicated and very expensive process. **asi**

programs have proven to be the most cost effective program for many Fortune 500 companies. **asi** is the performance evaluation of choice because we work to meet our clients' special needs. We have developed new matrices, customized performance evaluation samples and specialized report formats to meet the changing requirements of our clients. At **asi**, the customer always comes first and we are always trying to find new and better ways to serve you.

Client input is very important to our program and, to this day, we continue to involve our customers. Every time a report is sent to our client, we include a laboratory questionnaire. Once we receive the completed questionnaires, we review them and respond to each individual client's request or need. Our programs, based on the thoughts and needs of our clients, have developed into the state-of-the-art multi-level design that it is today. It is this input that in the future will allow our programs to stay the highest quality and most comprehensive performance evaluation program available.

"ASI's full-volume, double-blind performance evaluation samples have become an integral part of our environmental Quality Assurance program. ASI has provided excellent service; the staff is always helpful."

– Wilson Hershey, Ph.D.
 President
 Lancaster Laboratories
 Services, Inc.

"The Allied Signal Performance directed by Analytical & Environmental Services, Inc. has relied on high quality, full volume samples prepared by ASI. ASI can prepare and document complex mixtures and matrices not found anywhere in the industry...ASI is the only company I have found that can meet my requirements for this program."

– Marion R. Surgi, Ph.D.
 President
 Analytical & Environmental
 Services, Inc.

The Environmental Laboratory Program



(ELP™).

Key Benefits

First in the Industry: Analytical Standards, Incorporated (asi), was first in the industry to provide you with a performance evaluation program combining a double-blind format with a round-robin statistical base. We have designed a total laboratory

evaluation program. This program, while being a trend setter, has also managed the following achievements.

Double-Blind, Round-Robin Format: asi was first in the industry to provide you with a double-blind evaluation measuring your performance against your peers in the environmental business giving you a round-robin statistical base. In a double-blind format, all samples go through the laboratory without the analyst's knowledge so these samples are treated like all the other every day samples.

Entire Line of Whole-Volume, Real-World Samples: asi was first in the environmental performance evaluation market to offer a complete line of inorganic and organic whole-volume, real world samples. All of our samples are designed to look and feel like any other sample received by your laboratory. With single-blind concentrates, you can directly inject the PT sample to avoid the extraction process. Since our samples are whole volume, they must be extracted. With our program, no dilutions are necessary; our samples are ready to analyze.

A Multi-level Report Format: asi offers the original multi-level report to the environmental industry. This report is the most complete, concise and comprehensive report available. The ELP report provides all pertinent information in an easily obtainable format. No long hours of review are necessary because all the data is at your fingertips.

False Positive Reporting: asi was the first, and is the only, performance evaluation provider to report false positives. This service allows you to check cross contamination and is another way to evaluate your laboratory services.

Award of Excellence for the Best of the Best: asi offers the first recognition of excellence in laboratory performance. The top ten percent of all participating laboratories in each study receive the Award of Excellence. This has become the most coveted and respected symbol of excellence in the industry today. This award, in conjunction with our multi-level report, has become a powerful marketing tool for sales and marketing staffs.

Analytical Standards, Incorporated, (asi) has been a pioneer in the performance evaluation industry. We provided laboratories with the first double-blind, round-robin program. Using a complete line of inorganic and organic real-world, whole volume samples, we will evaluate the facility of your choice from log in to report generation. By compiling these results into our state-of-the-art, multi-level report, we provide detailed information on all aspects of a laboratory's performance. Your facility will be able to compare overall laboratory operation with its peers. asi also

recognizes outstanding laboratory performance. The Award of Excellence is the most recognized symbol of analytical performance excellence in the environmental industry. By combining these innovative performance evaluation techniques and methods, you can move your facility into the next generation of quality control: **THE ENVIRONMENTAL LABORATORY PROGRAM**

"By routinely participating in the ASI double-blind performance audit, Envirotest has been able to identify internal analytical quality problems that would have otherwise been difficult to isolate. Since our analysts know that at any time their performance may be evaluated by a double-blind sample, the overall quality of their work has improved drastically."

– Pat Chany
QA/QC Director
Envirotest Laboratories, Inc.

ELP Standard Specifications

INORGANICS

ELP TRACE METALS

Standard includes one to three one liter, whole-volume samples ready to be analyzed for Ag, Al, As, B, Ba, Be, Cd, Co, Cr Cu, Fe, Hg, Mn, Mo, Ni, Pb, Sb, Se, Si, Sn, Sr, Ti, Tl, V and Zn. Sample concentration range: 1 - 800 ug/L. This set also included Calcium (Ca), Magnesium (Mg), Potassium (K), Sodium (Na) and Total Hardness as CaCO₃. Sample concentration range: 1 - 250 mg/L.

ELP RESIDUAL CHLORINE

Whole-volume two hundred fifty (250) milliliter sample ready to be analyzed for Total Residual Chlorine. Sample concentration range: 0.15 – 5.0 mg/L.

ELP COLOR

Whole-volume 125ml sample for EPA methods 110.1 and 110.2, SM 2120B and 2120E. Sample is in a range of 10 – 75 PC units.

ELP CYANIDE

Whole-volume one liter sample ready to be analyzed for Total Cyanide. Sample concentration range: 0.03-1.0 mg/L.

ELP ORGANIC HALIDE

Whole-volume five hundred (500) milliliter sample ready to be analyzed for Total Organic Halide. Sample concentration range: 10 -1000 ug/L.

ELP HEXAVALENT CHROMIUM

Whole-volume five hundred (500) milliliter sample ready to be analyzed for Hexavalent Chromium (Cr⁶⁺). Sample concentration range: 15 -10,000 ug/L.

ELP MBAS

Whole-volume five hundred (500) milliliter sample ready to be analyzed for MBAS, anionic surfactants. Sample concentration range: 0.125 – 0.25 mg/L.

ELP OIL AND GREASE

Whole-volume one liter sample ready to be analyzed for Oil & Grease. Sample concentration range: 8.0 - 50.0 mg/L.

ELP PHENOLICS

Whole-volume one liter sample ready to be analyzed for Total Phenolics. Sample concentration range: 0.04 - 5.0 mg/L.

ELP TURBIDITY

Whole-volume five hundred (500) milliliter sample ready to be analyzed for Turbidity. Sample concentration range: 0.1 - 8.0 NTUs.

ELP DEMAND

Whole-volume one (1) liter sample ready to be analyzed for four different demand tests. Biochemical Oxygen Demand Sample concentration range: 9.0 - 158 mg/L, Carbonaceous Biochemical Oxygen Demand Sample concentration range: 8.0 - 136 mg/L, Chemical Oxygen Demand Sample concentration range: 15.0 - 256 mg/L and Total Organic Carbon Sample concentration range: 6.0 - 101 mg/L.

ELP NUTRIENTS

Whole-volume one liter sample ready to be analyzed for Ammonia as N, Nitrate plus Nitrite as N, Total Kjeldahl Nitrogen, Orthophosphate as P and Total Phosphorus. Sample concentration range: 0.05 – 40.0 mg/L.

ELP MINERALS

Whole-volume one liter sample ready to be analyzed for Alkalinity (total as CaCO₃), Calcium, Chloride, Fluoride, Hardness (total as CaCO₃), Magnesium, Potassium, Sodium, Specific Conductivity and Sulfate. Sample concentration range: 0.2 – 350 mg/L and 50-1050 umhos/cm.

ORGANICS

ELP DIESEL RANGE ORGANICS

Whole-volume one liter sample ready to be analyzed for Diesel Range Organics (DRO). Sample concentration range: 1.0 - 50.0 mg/L.

ELP GASOLINE RANGE ORGANICS

2 x Whole-volume forty (40) milliliter sample ready to be analyzed for Gasoline Range Organics (GRO). Sample concentration range: 50.0 - 500 ug/L.

ELP PETROLEUM HYDROCARBON

Whole-volume one liter sample ready to be analyzed for Total Petroleum Hydrocarbons (TRPH). Sample concentration range: 1.0 - 50.0 mg/L.

ELP AROMATIC VOLATILES

2 x Whole-volume forty (40) milliliter sample ready to be analyzed for BTEX + MTBE. Sample concentration range: 1.0 – 200 ug/L.

ELP AROMATIC VOLATILES

2 x Whole-volume forty (40) milliliter sample ready to be analyzed for BTEX + MTBE. Sample concentration range: 1.0 – 200 ug/L.

ELP PESTICIDES

Whole-volume one liter sample ready to be analyzed for Organochlorine Pesticides. Sample concentration range: 1.0 - 100 ug/L.

ELP CHLORDANE

Whole-volume one liter sample ready to be analyzed for Chlordane. Sample concentration range: 1.0 - 100 ug/L.

ELP TOXAPHENE

Whole-volume one liter sample ready to be analyzed for Toxaphene. Sample concentration range: 1.0 - 100 ug/L.

ELP PCBs

Whole-volume one liter sample ready to be analyzed for Polychlorinated biphenyls. Sample concentration range: 1.0 - 100 ug/L.

ELP PCBs in oil

Whole-volume forty (40) milliliter sample ready to be analyzed for Polychlorinated biphenyls in oil. Sample concentration range: 1.0 - 50 mg/kg.

ELP PAHs

Whole-volume one liter sample ready to be analyzed for Polyaromatic Hydrocarbons. Sample concentration range: 1.0 - 100 ug/L.

ELP HERBICIDES

Whole-volume one liter sample ready to be analyzed for Herbicides. Sample concentration range: 1.0 - 100 ug/L.

ELP VOLATILE ORGANICS

2 x whole-volume forty (40) milliliter sample ready to be analyzed for Volatiles Organics. Sample concentration range: 1.0 - 200 ug/L.

ELP SEMIVOLATILE ORGANICS

Whole-volume one liter sample ready to be analyzed for Semivolatiles Organics. Sample concentration range: 10.0 - 200 ug/L.





ELP Standards Pricing

The Environmental Laboratory Program PT Standards

Description	Catalog #	Price
Trace Metals	DB1000	\$80
Total Residual Chlorine	DB2100	\$45
Color	DB2200	\$45
Total and Amenable Cyanide	DB2300	\$45
Total Organic Halide	DB2400	\$45
Hexavalent Chromium [Cr ⁶⁺]	DB2500	\$45
MBAS, anionic surfactants	DB2600	\$45
Oil & Grease	DB2700	\$45
Total Phenolics	DB2800	\$45
Turbidity	DB2900	\$45
Demand	DB3000	\$60
Nutrients	DB4000	\$60
Minerals	DB5000	\$60
COMPLETE ELP INORGANIC SET*	DB0002	\$632
Diesel Range Organics [DRO]	DB6100	\$85
Gasoline Range Organics [GRO]	DB6200	\$85
Total Petroleum Hydrocarbons	DB6300	\$85
Volatile Aromatics [BTEX +MTBE]	DB6500	\$85
Pesticides	DB7000	\$85
Pesticides II [Chlordane]	DB7100	\$75
Pesticides III [Toxaphene]	DB7200	\$75
PCBs in Water	DB7500	\$85
PCBs in Oil	DB7700	\$85
PAHs	DB8000	\$85
Herbicides	DB8500	\$85
Volatile Organics	DB9000	\$95
Semivolatile Organics	DB9500	\$200
COMPLETE ELP ORGANIC SET*	DB0003	\$1150
COMPLETE ELP SET[#]	DB0001	\$1688

* All Set Prices Include a 5% Discount

The Complete Set Price Includes an Additional 5% Discount or a 10% total discount.



"The double-blind quality control program developed by ASI has proven to be an effective tool for evaluating all aspects of our laboratory operations from the original quotation to generation of final reports. ASI has clearly set the standard for the environmental laboratory industry."

- Michael J. Herdlick
Quality Assurance Officer
Aqua Tech Environmental Labs

"ASI has solved the problem of finding and maintaining a truly double-blind performance audit program at a reasonable cost. The reports are read eagerly by management. ASI has been a resource during corrective action investigations."

- Gregory A. Malzone
Quality Assurance Coordinator
Halliburton NUS Laboratory

"...The participants in your PE sample studies are those laboratories that are willing to put their money on their claims to being dedicated to quality. We welcome the opportunity to evaluate ourselves against only the best in the laboratory industry...let me congratulate you on a program well conceived and well delivered."

- Roy-Keith Smith, Ph.D.
QA Manager
Analytical Services, Inc.

The BenchMark Performance Audit



The BenchMark Program was designed to take the place of the USEPA's Water Pollution (WP) and Water Supply (WS) studies but with some significant improvements. The BenchMark Performance Audit Program is the first program to give you a choice of whole volume or concentrated samples. It allows the laboratory to assess their quality by participating in a multi-laboratory performance evaluation. With whole volume, the samples arrive ready to analyze, just like other samples your facility receives and analyzes on a routine basis. This means no more wasted time diluting PE samples and no possible dilution errors. While maintaining quality and expedience, **asi's** BenchMark program remains very economical, allowing your lab to maintain performance evaluation requirements without ballooning your budget. Our program is accepted for certification purposes in many states. Call **asi** today to place an order, request a quote or get more information.

"This program...has contributed to more efficient lab usage and a reduction in environmental lab expenditures for Shell. The prompt and efficient service Analytical Standards, Inc. provides has more than met all of Shell's requirements."

– Ron Claybon
 Environmental Program
 Administrator
 Shell Chemical Corporation

Key Benefits

High Quality Standards: Like all **asi** products, these samples are produced to the highest standards in the industry.

Cost Effective Standards: **asi** offers more package deals to save our clients money. We offer numerous discounts for full line participation, full program participation and frequency.

Convenient Study Schedule: **asi** offers studies that start the first of each month. You pick the time that's best for you.

100% Customer Satisfaction Guarantee: As with all **asi** products, all product lines are covered by our 100% Customer Satisfaction Guarantee. If, for any reason, you are not satisfied with an **asi** sample(s), **you** have the choice of a full refund or a replacement sample at no charge.

We will not be undersold! **asi** will always beat any competitor's written price by at least 10%.

PT Now Quick Response Standards



asi now offers a quick response program. Suppose you need your certification by next week. Maybe you transposed the numbers on your last PT samples. Maybe you just need to show a new client that you are proficient for a series of parameters in a hurry. Let's face it, sometimes there are circumstances where timing is everything. These are the situations where the PT NOW quick response PT standards are perfect. The 2001 NELAC standards now allow for quick response PT samples at the discretion of each state. You order all the samples that you need. They will be shipped to you the same day you place the order, using overnight delivery to arrive the next day. Analyze the standards and fax or email them back to **asi**. Within twenty-four (24) hours of receiving your data, your report will be faxed to you and to any state certification agency you specify.

The On Target InstaCheck Quality Control Standards



With On Target Instacheck Standards, you can hit the highest marks for quality, accuracy, and affordability in the industry today. We offer quality control samples with a difference. Each On Target InstaCheck Standard has been analyzed by up to 150 commercial environmental laboratories, making our statistical based results the best in the industry. The On Target InstaCheck Standards are ideally suited for:

Laboratory Corrective Actions: On Target can show that your laboratory's corrective actions have worked and your systems are back in control. This allows you to start production sooner.

Laboratory Quality Control: On Target, when used as part of a regular quality system, allows for early detection and correction of analytical problems. Finding these problems early can save your laboratory both time and money in the future.

Training for the Entire Laboratory: On Target allows your entire staff to train on check Samples yielding better performance on your everyday samples. This also gives your staff a better feeling for their overall performance.

Method Performance Verification: On Target samples can be used to verify the performance of a new method or to determine the outcome of a method modification.

Ready To Use Whole Volume PT and QC Standards

asi manufactures Proficiency Testing and Quality Control standards in concentrate and whole volume forms. Most PT samples are provided in concentrate form. Unfortunately for you the customer, this means much more work. When the standards arrive, you must dilute them. This is not the usual process for most of the normal samples that are received in the laboratory. That makes the dilution process a costly one. It costs you time, effort and money and can lead to dilution errors. We offer a distinctive solution for this problem with our ready to use whole volume line of PT and QC standards. Any standard you see in our catalog can be provided in whole volume form. Our skilled laboratory staff will prepare the whole volume standards, neatly package and ship your standards following EPA guidelines on the day you place the order. These whole volume standards are always fresh and ready to go. The advantages of whole volume standards are many. With these samples you can run all your tests the same way you do all your everyday samples. No more need for Class A pipettes or volumetric flasks. Order the whole volume standards today and save all the time and money! All this and a reasonable cost too.



Water Pollution (WP)/DMR-QA Inorganic Standards Specifications

Unless otherwise noted, all WP inorganic standards are provided in concentrate form to be diluted 10 ml to 1 L. Each standard contains enough concentrate to prepare 2.5 liters of sample, more than enough to cover all your testing needs. All standards are compliant with EPA, NELAC and state specific criteria where applicable.

WP TRACE METALS

Sample contains Aluminum, Antimony, Arsenic, Barium, Beryllium, Boron, Cadmium, Chromium, Cobalt, Copper, Iron, Lead, Manganese, Mercury, Molybdenum, Nickel, Selenium, Silver, Strontium, Thallium, Tin, Titanium, Vanadium and Zinc all within specified concentration ranges.

WP ACIDITY

Sample contains Acidity within the concentration range of 650 - 1800 mg/L.

WP RESIDUAL CHLORINE

Sample contains Total Residual Chlorine within the concentration range of 0.5 - 3.0 mg/L.

WP COLOR

Ready-to-use 250ml sample for EPA methods 110.1 and 110.2, SM 2120B and 2120E within the test range of 10 - 75 PC units.

WP CYANIDE

Sample contains Total Cyanide within the concentration range of 0.1 - 1.0 mg/L.

WP TOTAL ORGANIC HALIDE

Sample contains Total Organic Halide (TOX) within the concentration range of 300 - 1,500 ug/L.

WP CHROMIUM VI

Sample contains Hexavalent Chromium (Cr^{6+}) within the concentration range of 45 - 880 ug/L.

WP SILICA as SiO_2

Sample contains Silica within the concentration range of 50 - 250 mg/L.

WP SURFACTANTS - MBAS

Sample contains MBAS (anionic surfactant) within the concentration range of 0.2 - 1.0 mg/L.

WP OIL AND GREASE

Sample contains Oil and Grease within the concentration range of 20 - 100 mg/L.

WP PHENOLICS (4AAP)

Sample contains Total Phenolics within the Concentration range of 0.06 - 5.0 mg/L.

WP SULFIDE

Sample contains Sulfide within the concentration range of 1 - 10 mg/L.

WP TURBIDITY

Sample contains Turbidity within the concentration range of 1.0 - 20 NTUs.

WP DEMAND

Sample contains Biochemical Oxygen Demand, Carbonaceous BOD, Chemical Oxygen Demand and Total Organic Carbon within the concentration ranges of 6.0-250 mg/L.

WP BROMIDE

Sample contains Bromide within the concentration range of 1.0 - 10 mg/L.

WP SIMPLE NUTRIENTS

Sample contains Ammonia as N, Nitrate as N, Nitrite as N, Nitrate + Nitrite as N and Orthophosphate as P within the concentration ranges of 0.25 - 40 mg/L.

WP COMPLEX NUTRIENTS

Sample contains TKN and Total Phosphorus within the concentration ranges of 0.5 - 40 mg/L.

WP MINERALS

Sample contains Alkalinity (total as $CaCO_3$), Chloride, Fluoride, Potassium, Sodium, Specific Conductivity and Sulfate all within the concentration ranges of 0.3 - 100 mg/L and 200 - 930 umhos/cm.

WP HARDNESS

Sample contains Calcium, Calcium Hardness (as $CaCO_3$), Hardness (total as $CaCO_3$) and Magnesium all within the concentration ranges of 0.2 - 440 mg/L.

WP pH

Sample contains pH within the concentration range of 5 - 10 Standard Units (SU).

WP SOLIDS

Sample contains Non-Filterable Residue (TSS), Total Dissolved Solids (TDS) and Total Solids (TS) all within the concentration ranges of 23 - 675 mg/L.

WP SETTLEABLE SOLIDS

Sample contains Settleable Solids within the concentration range of 5 - 100 ml/L.

WP VOLATILE SOLIDS

Sample contains Volatile Solids within the specified certification range of 100 - 500 mg/L.

STATE SPECIFIC WP STANDARDS

WP HEXANE EXTRACTABLES

Standard contains hexadecane and stearic acid within the state specific certification range of 8.0 - 50 mg/L. For use with Method 1664.

March 23, 2005

Dear Mr. Anderson,

I want to thank you for the quick response in reporting our analysis results from WP-081. It continues to be a very positive experience to do business with your company. You and your staff are cordial, competent and professional. I look forward to many more years of your service.

Sincerely,
Ralph Lane Jr.
City of Colville, WA



Water Pollution (WP)/DMR-QA Inorganic Standards Pricing

BenchMark PT Standards

Proficiency Testing (PT) standards are used to demonstrate compliance with EPA, NELAC or state specific requirements for obtaining and maintaining laboratory accreditation. Order PT standards as part of your laboratory's certification process. Although PT standards can be ordered at any time, each study is 45 day long and a new study starts each month.

On Target InstaCheck Standards

On Target InstaCheck standards are used by a laboratory as part of a routine Quality Control (QC) program. These standards should be used to verify the laboratory is in compliance with customer or regulatory data quality objectives. They are supplied with certified values and acceptance limits for immediate feedback on laboratory data quality.

PT NOW Quick Response Standards

PT NOW Quick Response Standards are designed for laboratories that need to quickly demonstrate compliance with a PT requirement, complete a corrective action or add an analyte to their scope of accreditation. Order the samples today and they will arrive tomorrow. Then your results will be faxed to you and the agency of your choice, within 24 hours of when we receive your results.

Description	BenchMark PT Standards		On Target InstaCheck Standards		PT NOW Quick Response Standards	
	Catalog #	Price	Catalog #	Price	Catalog #	Price
Trace Metals	WP1000	\$80	OP1000	\$80	NP1000	\$96
Acidity	WP2000	\$50	OP2000	\$50	NP2000	\$60
Residual Chlorine	WP2100	\$35	OP2100	\$35	NP2100	\$42
Color	WP2200	\$50	OP2200	\$50	NP2200	\$60
Cyanide	WP2300	\$35	OP2300	\$35	NP2300	\$42
Total Organic Halide [TOX]	WP2400	\$50	OP2400	\$50	NP2400	\$60
Hexavalent Chromium [Cr ⁶⁺]	WP2500	\$45	OP2500	\$45	NP2500	\$54
Silica as SiO ₂	WP2550	\$50	OP2550	\$50	NP2550	\$60
MBAS/Surfactants	WP2600	\$55	OP2600	\$55	NP2600	\$66
Oil & Grease	WP2700	\$40	OP2700	\$40	NP2700	\$48
Phenolics	WP2800	\$35	OP2800	\$35	NP2800	\$42
Sulfide	WP2850	\$50	OP2850	\$50	NP2850	\$60
Turbidity	WP2900	\$40	OP2900	\$40	NP2900	\$48
Demand [BOD, CBOD, COD and TOC]	WP3000	\$50	OP3000	\$50	NP3000	\$60
Bromide	WP3500	\$50	OP3500	\$50	NP3500	\$60
Simple Nutrients	WP4000	\$45	OP4000	\$45	NP4000	\$54
Complex Nutrients	WP4500	\$25	OP4500	\$25	NP4500	\$30
Minerals	WP5000	\$35	OP5000	\$35	NP5000	\$42
Hardness	WP5200	\$35	OP5200	\$35	NP5200	\$42
pH	WP5500	\$35	OP5500	\$35	NP5500	\$42
Solids: [TDS, TS and TSS]	WP5600	\$35	OP5600	\$35	NP5600	\$42
Settleable Solids	WP5700	\$50	OP5700	\$50	NP5700	\$60
Volatile Solids	WP5900	\$50	OP5900	\$50	NP5900	\$60
STATE SPECIFIC STANDARDS						
Hexane Extractable Material [Method 1664]	WP2750	\$50	OP2750	\$50	NP2750	\$60



Water Pollution (WP) Organic Standards Specifications

Unless otherwise noted, all WP organic standards are provided in concentrate form to be diluted 3 ml to 1 L. Each standard contains enough concentrate to prepare 2.5 liters of sample, more than enough to cover all your testing needs. All standards are compliant with EPA, NELAC and state specific criteria where applicable.

WP DIESEL RANGE ORGANICS

Sample contains DRO within the concentration range of 500 - 4000 ug/L. For use with EPA method 8015M.

WP GASOLINE RANGE ORGANICS

Sample contains GRO within the concentration range of 200 - 4000 ug/L. For use with EPA method 8015M.

WP PETROLEUM HYDROCARBON

Sample contains Total Recoverable Petroleum Hydrocarbons (TRPH) within the concentration range of 20.0 -170 mg/L. For use with gravimetric methods.

WP AROMATIC VOLATILES

Sample contains BTEX + MTBE within NELAC and state specific concentration range of 7.0 - 300 ug/L. For use with EPA method 602, 8020 and 8021.

WP PESTICIDES

Sample contains a majority of the analytes listed. Concentration ranges are 0.5-100 ug/L. For use with EPA methods 608, 8080 and 8081.

Aldrin	Endosulfan I
α-BHC	Endosulfan II
β-BHC	Endosulfan Sulfate
δ-BHC	Endrin
γ-BHC (Lindane)	Endrin aldehyde
DDD (4,4')	Heptachlor
DDE (4,4')	Heptachlor epoxide
DDT (4,4')	Methoxychlor
Dieldrin	

WP PESTICIDES II

Sample contains a majority of the analytes listed. Concentration ranges are 2.0-20 ug/L.

Azinphos-methyl (Guthion)	Endrin ketone
Diazinon	Malathion
	Parathion, ethyl

WP CHLORDANE

Sample contains chlordane (technical) within the concentration range of 3.0-25 ug/L. For use with EPA methods 608, 8080 and 8081.

WP TOXAPHENE

Sample contains toxaphene (total) within the concentration range of 20-100 ug/L. For use with EPA methods 608, 8080 and 8081.

WP PCBs IN WATER

Sample contains a single Aroclor chosen at random from 1016, 1221, 1232, 1242, 1248, 1254 or 1260 each within the concentration range of 1-15 ug/L. For use with EPA methods 608, 8080 and 8082.

WP PCBs IN OIL

Sample contains a single Aroclor chosen at random from 1016, 1242, 1254 or 1260 all within the EPA, NELAC and the concentration range of 12-50 mg/kg. For use with EPA methods 608, 8080 and 8082.

WP PAHs

Sample contains a majority of the analytes listed. Concentration ranges are 0.3 – 10.0 ug/L. Designed for use with HPLC methods.

Acenaphthene	Chrysene
Acenaphthylene	Dibenzo(a,h)anthracene
Anthracene	Fluoranthene
Benzo(a)anthracene	Fluorene
Benzo(b)fluoranthene	Indeno(1,2,3-cd)pyrene
Benzo(k)fluoranthene	Naphthylene
Benzo(g,h,i)perylene	Phenanthrene
Benzo(a)pyrene	Pyrene

WP NITROAROMATIC/NITROAMINES

Sample contains a majority of the analytes listed. Concentration ranges are 1.0 – 20.0 ug/L. Designed for use with method 8330.

4-Amino-2,6-dinitrotoluene	2-Nitrotoluene
2-Amino-4,6-dinitrotoluene	3-Nitrotoluene
1,3-Dinitrobenzene	4-Nitrotoluene
2,4-Dinitrotoluene	RDX
2,6-Dinitrotoluene	Tetryl
HMX	1,3,5-Trinitrobenzene
Nitrobenzene	2,4,6-Trinitrotoluene

WP HERBICIDES

Sample contains a majority of the analytes listed. Concentration ranges are 1-10 ug/L. For use with EPA methods 615, 8150 and 8151.

2,4-D	2,4,5-T
Dicamba	2,4,5-TP (Silvex)
Disulfoton	

WP VOLATILES

Sample contains a majority of the analytes listed. Concentration ranges are 7-300 ug/L. For use with methods 601, 602, 8010/8020 /8021, 624, 8240 and 8260.

Benzene	1,2-Dichloropropane
Bromodichloromethane	cis-1,3-Dichloropropene
Bromoform	trans-1,3-Dichloropropene
Bromomethane	Ethylbenzene
Carbon tetrachloride	2-Hexanone
Chlorobenzene	Methylene chloride
Chloroethane	4-Methyl-2-pentanone [MIBK]
Chloroform	Methyltertbutylether [MTBE]
Chloromethane	Styrene
Dibromochloromethane	1,1,2,2-Tetrachloroethane
1,2-Dichlorobenzene	Tetrachloroethane
1,3-Dichlorobenzene	Toluene
1,4-Dichlorobenzene	1,1,1-Trichloroethane
1,1-Dichloroethane	1,1,2-Trichloroethane
1,2-Dichloroethane	Trichloroethene
1,1-Dichloroethene	Trichlorofluoromethane
cis-1,2-Dichloroethene	Vinyl chloride
trans-1,2-Dichloroethene	Xylenes, total

WP BASE/NEUTRALS

Sample contains a majority of the analytes listed. Concentration ranges are 10 - 1000 ug/L. For use with methods 604, 625, 8040 and 8270.

Acenaphthene	Diethyl phthalate
Acenaphthylene	Dimethylphthalate
Anthracene	2,4-Dinitrotoluene
Benidine	2,6-Dinitrotoluene
Benzo(a)anthracene	Di-n-octylphthalate
Benzo(b)fluoranthene	bis(2-Ethylhexyl)phthalate
Benzo(k)fluoranthene	Fluoranthene
Benzo(g,h,i)perylene	Fuorene
Benzo(a)pyrene	Hexachlorobenzene
4-Bromophenylphenylether	Hexachlorobutadiene
Butyl benzyl phthalate	Hexachlorocyclopentadiene
bis(2-Chloroethoxy)methane	Hexachloroethane
bis(2-Chloroethyl)ether	Indeno(1,2,3-cd)pyrene
bis(2-Chloroisopropyl)ether	Isophorone
2-Chloronaphthalene	2-Methylnaphthalene
4-Chlorophenylphenylether	Naphthalene
Chrysene	Nitrobenzene
Dibenzo(a,h)anthracene	N-Nitrosodimethylamine
Dibenzofuran	N-Nitroso-din-propylamine
Di-n-butylphthalate	N-Nitrosodiphenylamine
1,2-Dichlorobenzene	Phenanthrene
1,3-Dichlorobenzene	Pyrene
1,4-Dichlorobenzene	1,2,4-Trichlorobenzene
3,3-Dichlorobenzidine	

WP ACIDS

Sample contains a majority of the analytes listed. Concentration ranges are 10 - 1000 ug/L. For use with methods 604, 625, 8040 and 8270.

4-Chloro-3-methylphenol	4-Methylphenol [p-Cresol]
2-Chlorophenol	2-Nitrophenol
2,4-Dichlorophenol	4-Nitrophenol
2,6-Dichlorophenol	Pentachlorophenol
2,4-Dimethylphenol	Phenol
2,4-Dinitrophenol	2,4,5-Trichlorophenol
2-Methyl-4,6-dinitrophenol	2,4,6-Trichlorophenol
2-Methylphenol [o-Cresol]	

STATE SPECIFIC WP STANDARDS

WASHINGTON STATE EPH

Sample designed in cooperation with the State of Washington Department of Ecology. It is prepared to meet the requirements for their Toxic Cleanup Program for Extractable Petroleum Hydrocarbons.

WASHINGTON STATE VPH

Sample was designed in cooperation with the State of Washington Department of Ecology. It is prepared to meet the requirements for their Toxic Cleanup Program for Volatile Petroleum Hydrocarbons.

Water Pollution (WP) Organic Standards Pricing

BenchMark PT Standards

Proficiency Testing (PT) standards are used to demonstrate compliance with EPA, NELAC or state specific requirements for obtaining and maintaining laboratory accreditation. Order PT standards as part of your laboratory's certification process. Although PT standards can be ordered at any time, each study is 45 day long and a new study starts each month.

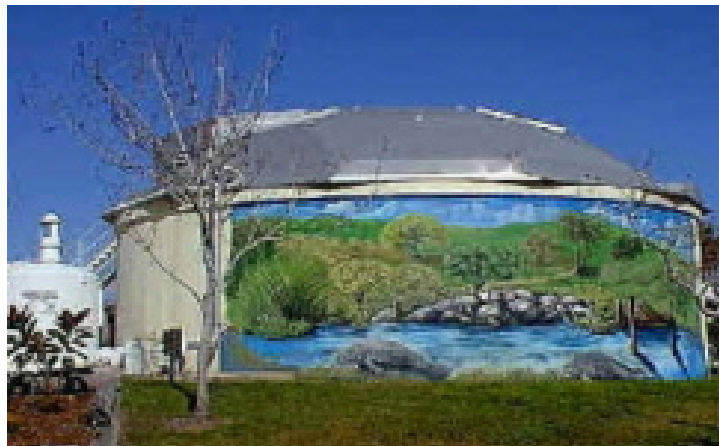
On Target InstaCheck Standards

On Target InstaCheck standards are used by a laboratory as part of a routine Quality Control (QC) program. These standards should be used to verify the laboratory is in compliance with customer or regulatory data quality objectives. They are supplied with certified values and acceptance limits for immediate feedback on laboratory data quality.

PT NOW Quick Response Standards

PT NOW Quick Response Standards are designed for laboratories that need to quickly demonstrate compliance with a PT requirement, complete a corrective action or add an analyte to their scope of accreditation. Order the samples today and they will arrive tomorrow. Then your results will be faxed to you and the agency of your choice, within 24 hours of when we receive your results.

Description	BenchMark PT Standards		On Target InstaCheck Standards		PT NOW Quick Response Standards	
	Catalog #	Price	Catalog #	Price	Catalog #	Price
Diesel Range Organics (DRO)	WP6100	\$65	OP6100	\$65	NP6100	\$78
Gasoline Range Organics (GRO)	WP6200	\$65	OP6200	\$65	NP6200	\$78
Total Petroleum Hydrocarbons (TRPH)	WP6300	\$65	OP6300	\$65	NP6300	\$78
Aromatic Volatiles	WP6500	\$65	OP6500	\$65	NP6500	\$78
Organochlorine Pesticides	WP7000	\$65	OP7000	\$65	NP7000	\$78
Pesticides II [Chlordane]	WP7100	\$50	OP7100	\$50	NP7100	\$60
Pesticides III [Toxaphene]	WP7200	\$50	OP7200	\$50	NP7200	\$60
PCBs	WP7500	\$65	OP7500	\$65	NP7500	\$78
PCBs in oil	WP7700	\$65	OP7700	\$65	NP7700	\$78
Polynuclear Aromatic Hydrocarbons	WP8000	\$65	OP8000	\$65	NP8000	\$78
Nitroaromatic/Nirtoamines	WP8200	\$65	OP8200	\$65	NP8200	\$78
Chlorinated Herbicides	WP8500	\$65	OP8500	\$65	NP8500	\$78
Volatile Organics [VOA]	WP9000	\$70	OP9000	\$70	NP9000	\$84
Base/Neutrals	WP9500	\$70	OP9500	\$70	NP9500	\$84
Acids	WP9700	\$65	OP9700	\$65	NP9700	\$78
STATE SPECIFIC STANDARDS						
Washington State EPH	WP6150	\$70	OP6150	\$70	NP6150	\$84
Washington State VPH	WP6250	\$70	OP6250	\$70	NP6250	\$84



Water Supply (WS) Inorganic Standards Specifications

Unless otherwise noted, all WS inorganic standards are provided in concentrate form to be diluted 10 ml to 1 L. Each standard contains enough concentrate to prepare 2.5 liters of sample, more than enough to cover all your testing needs. All standards are compliant with EPA, NELAC and state specific criteria where applicable.

WS TRACE METALS I

Sample contains Aluminum, Antimony, Arsenic, Barium, Beryllium, Boron, Cadmium, Chromium, Copper, Iron, Lead, Manganese, Mercury, Molybdenum, Nickel, Selenium, Silver, Thallium, Vanadium and Zinc all within specified concentration ranges.

WS CORROSIVITY

Sample contains Corrosivity (Langelier Index) within the concentration range of -4 to +4 SI units.

WS RESIDUAL CHLORINE

Sample contains Free Residual Chlorine within the concentration range of 0.5 – 3.0 mg/L.

WS CYANIDE

Sample contains simple cyanide within the concentration range of 0.1 - 0.5 mg/L.

WS CHROMIUM VI

Sample contains Hexavalent Chromium (Cr^{6+}) within the concentration range of 5.0 - 50 mg/L.

WS SILICA

Sample contains Silica (SiO_2) within the concentration range of 52.0 - 130 mg/L.

WS SURFACTANTS – MBAS

Sample contains MBAS (anionic surfactant) within the concentration range of 0.05 – 1.0 mg/L.

WS TURBIDITY

Sample contains Turbidity within the concentration range of 0.5 – 8.0 NTUs.

WS TOC

Sample contains Total Organic Carbon within the concentration range of 1.2 – 4.9 mg/L.

WS IDBP: BROMATE/BROMIDE

Sample contains Bromate & Bromide within the concentration range of 7.0 – 1000 ug/L.

WS IDBP: CHLORATE/CHLORITE

Sample contains Chlorate and Chlorite within the concentration range of 7.0 – 1000 ug/L.

WS PERCHLORATE

Sample contains Perchlorate within the concentration range of 4.0 – 20.0 ug/l.

WS UV254 - DOC

Sample contains UV254 method organic residue and DOC within concentration ranges of 0.02 – 0.7 cm^{-1} .

WS NUTRIENTS

Sample contains Nitrate as N, Nitrite as N, Nitrate+Nitrite as N, and Orthophosphate as P all within the concentration ranges of 0.4 - 9.0 mg/L.

WS MINERALS

Sample contains Alkalinity (total as $CaCO_3$), Chloride, Fluoride, Potassium, Sodium, Specific Conductivity and Sulfate all within concentration ranges of 1.0 - 200 mg/L and 250 – 2500 umhos/cm.

WS HARDNESS

Sample contains Calcium, Calcium Hardness (as $CaCO_3$), Hardness (total as $CaCO_3$) and Magnesium, all within NELAC and state specific certification range of 2.0 – 375 mg/L.

WS pH

This whole volume ready to use sample contains pH within the concentration range of 5 - 10 Standard Units (SU).

WS SOLIDS

This whole volume ready to use sample contains Non-Filterable Residue (TSS), Total Dissolved Solids (TDS) and Total Solids (TS) all within the concentration ranges of 5.0 - 600 mg/L.

STATE SPECIFIC WS STANDARDS

WS OHIO FLUORIDE

This 250 ml whole volume ready to use sample contains fluoride within the concentration range of 0.5 to 1.5 mg/l.

“...great as I expected. I get detailed instructions on sample preparation.”

“... You guys do great work, I appreciate your attentiveness, and your great attitude.”

Thank you,

Mr. Andrew Baskett
City of Elma, WA



Water Supply (WS) Organic Standards Specifications

Unless otherwise noted, all WS organic standards are provided in concentrate form to be diluted 3 ml to 1 L. Each standard contains enough concentrate to prepare 2.5 liters of sample, more than enough to cover all your testing needs. All standards are compliant with EPA, NELAC and state specific criteria where applicable.

WS DISINFECTION BY-PRODUCTS

Sample contains Organic Disinfection By-Products: Bromochloroacetic acid, Dibromoacetic acid, Dichloroacetic acid, Monobromoacetic acid, Monochloroacetic acid, and Trichloroacetic acid all in the concentration ranges of 7.0 – 40.0 ug/L. For use with EPA method 552.

WS CHLORAL HYDRATE

Sample contains Chloral Hydrate in the concentration range of 4.0 – 30.0 ug/L. For use with EPA method 551.

WS PESTICIDES

Sample contains a majority of the analytes listed. Concentration ranges are 0.1 - 100 ug/L. For use with EPA methods 505, 507, 508 and 525.

Alachlor	Hexachlorocyclopentadiene
Aldrin	Lindane (γ -BHC)
Atrazine	Methoxychlor
Bromacil	Metolachlor
Butachlor	Metribuzin
Chlorothalonil	Molinate
Diazinon	Prometon
Dieldrin	Prometryn
Dimethoate	Propachlor
Endrin	Simazine
Heptachlor	Trifluralin Thiobencarb
Heptachlor epoxide	
Hexachlorobenzene	

WS CHLORDANE

Sample contains Chlordane (technical) within the concentration range of 2 - 20 ug/L. For use with EPA methods 505, 508 and 525.

WS TOXAPHENE

Sample contains Toxaphene (total) within the concentration range of 3 - 20 ug/L. For use with EPA methods 505, 508 and 525.

WS CARBAMATES

Sample contains Aldicarb, Aldicarb sulfone, Aldicarb Sulfoxide, Baygon, Carbaryl, Carbofuran, 3-Hydroxycarbofuran, Methiocarb, Methomyl, and Oxamyl (Vydate) within the concentration ranges of 8.0 – 150 ug/L. For use with EPA method 531.1

WS PCBs

Sample contains PCBs as Decachlorobiphenyl within the concentration range of 0.5 – 5.0 ug/L. For use with EPA methods 505 and 508A.

WS HERBICIDES I

Sample contains a majority of the analytes listed. Concentration ranges are 1.0 - 250 ug/L. For use with EPA methods 515.1 and 551.

Acifluorfen	Dichloroprop
Bentazon	Dinoseb
Chloramben	5-Hydroxydicamba
2,4-D	4-Nitrophenol
2,4-DB	Pentachlorophenol
DCPA	Picloram
Dalapon	2,4,5-T
Dicamba	2,4,5-TP (Silvex)
3,5-Dichlorobenzoic acid	

WS HERBICIDES II

Sample contains Diquat, Endothall, Glyphosate and Paraquat within the concentration range of 8.0 - 800 ug/L.

WS REGULATED VOLATILES

Sample contains a majority of the analytes listed. Concentration ranges are 0.1 - 150 ug/L. For use with EPA methods 502.1, 502.2, 524.1, 524.1 and 524.2.

Benzene	Ethylene dibromide (EDB)
Carbon tetrachloride	Styrene
Chlorobenzene	Tetrachloroethylene
1,2-Dibromo-3-chloropropane (DBCP)	
1,2-Dichlorobenzene	Toluene
1,4-Dichlorobenzene	1,1,1-Trichloroethane
1,2-Dichloroethane	1,1,2-Trichloroethane
1,1-Dichloroethylene	Trichloroethylene
cis-1,2-Dichloroethylene	1,2,4-Trichlorobenzene
trans-1,2-Dichloroethylene	Vinyl chloride
Dichloromethane (Methylene Chloride)	
1,2-Dichloropropane	Total Trihalomethanes
Ethylbenzene	Total Xylenes

WS EDB/DBCP

Sample contains EthyleneDibromide (EDB) and 1,2-Dibromo-3-chloropropane (DBCP) within the concentration range of 0.2 – 2.0 ug/L. For use with EPA methods 504 and 551.

WS TRIHALOMETHANES

Sample contains Bromodichloromethane, Bromoform, Chlorodibromomethane Chloroform and Total Trihalomethanes all within the concentration ranges of 2.0 – 150 ug/L. For use with EPA methods 502.1, 502.2, 524.1 and 524.2.



WS UNREGULATED VOLATILES

Sample contains a majority of the analytes listed. Concentration ranges are 1.0 – 5.0 ug/L. For use with EPA methods 502.1, 502.2, 524.1, 524.1 and 524.2.

Bromobenzene	1,1-Dichloroethane
Bromochloromethane	1,3-Dichloropropane
Bromodichloromethane	2,2-Dichloropropane
Bromoform	1,1-Dichloropropene
Bromomethane	cis-1,3-Dichloropropene
n-Butylbenzene	trans-1,3Dichloropropene
sec-Butylbenzene	Fluorotrichloromethane
tert-Butylbenzene	Hexachlorobutadiene
Chlorodibromomethane	Isopropylbenzene
Chloroethane	4-Isopropyltoluene
Chloroform	n-Propylbenzene
Chloromethane	1,1,1,2-Tetrachloroethane
2-Chlorotoluene	1,1,2,2-Tetrachloroethane
4-Chlorotoluene	1,2,3-Trichlorobenzene
Dibromomethane	1,2,3-Trichloropropane
1,3-Dichlorobenzene	1,2,4-Trimethylbenzene
Dichlorodifluoromethane	1,3,5-Trimethylbenzene

WS SEMIVOLATILES

Sample contains a majority of the analytes listed. Concentration ranges are 0.2 – 50.0 ug/L.

Acenaphthene	Di-(2-ethylhexyl)phthalate
Acenaphthylene	Diethylphthalate
Anthracene	Dimethylphthalate
Benzo(a)anthracene	Di-(2-ethylhexyl)adipate
Benzo(b)fluoranthene	Fluoranthene
Benzo(k)fluoranthene	Fuorene
Benzo(g,h,i)perylene	Indeno(1,2,3-cd)pyrene
Benzo(a)pyrene	1-Methylnaphthylene
Butylbenzylphthalate	2-Methylnaphthylene
Chrysene	Naphthylene
Dibenz(a,h)anthracene	Phenanthrene
Di-n-butylphthalate	Pyrene
Di-n-octylphthalate	

STATE SPECIFIC WS STANDARDS

WS GASOLINE ADDITIVES

Sample contains ETBE, TAME, DIPE, MTBE, Freon 113, Freon 11, and 1-Phenylpropane all within the concentration ranges of 5.0 - 50.0 ug/L.

Water Supply (WS) Standards Pricing

BenchMark PT Standards

Proficiency Testing (PT) standards are used to demonstrate compliance with EPA, NELAC or state specific requirements for obtaining and maintaining laboratory accreditation. Order PT standards as part of your laboratory's certification process. Although PT standards can be ordered at any time, each study is 45 day long.

On Target InstaCheck Standards

On Target InstaCheck standards are used by a laboratory as part of a routine Quality Control program. These standards should be used to verify the laboratory is in compliance with customer or regulatory data quality objectives. Supplied with study mean and acceptance limits for immediate feedback on laboratory data quality.

PT NOW Quick Response Standards

PT NOW Quick Response Standards are designed for laboratories that need to quickly demonstrate compliance with a PT requirement, complete a corrective action or add an analyte to their scope of accreditation. Order the samples today and they will arrive tomorrow. Then your results will be faxed to you and the agency of your choice, within 24 hours of results.

	BenchMark PT Standards		On Target InstaCheck Standards		PT NOW Quick Response Standards	
	Catalog #	Price	Catalog #	Price	Catalog #	Price
Inorganics						
Trace Metals	WS1000	\$40	OS1000	\$40	NS1000	\$48
Corrosivity	WS2050	\$50	OS2050	\$50	NS2050	\$60
Residual Chlorine	WS2150	\$35	OS2150	\$35	NS2150	\$42
Cyanide	WS2300	\$35	OS2300	\$35	NS2300	\$42
Hexavalent Chromium [Cr ⁶⁺]	WS2500	\$45	OS2500	\$45	NS2500	\$54
Silica as SiO ₂	WS2550	\$50	OS2550	\$50	NS2550	\$60
MBAS/Surfactants	WS2600	\$55	OS2600	\$55	NS2600	\$66
Turbidity	WS2900	\$40	OS2900	\$40	NS2900	\$48
Total Organic Carbon	WS3400	\$40	OS3400	\$40	NS3400	\$48
IDBP: Bromate and Bromide	WS3500	\$45	OS3500	\$45	NS3500	\$54
IDBP: Chlorate and Chlorite	WS3600	\$45	OS3600	\$45	NS3600	\$54
Perchlorate	WS3700	\$50	OS3700	\$50	NS3700	\$60
UV254/DOC	WS3800	\$50	OS3800	\$50	NS3800	\$60
Nutrients	WS4000	\$45	OS4000	\$45	NS4000	\$54
Minerals	WS5000	\$35	OS5000	\$35	NS5000	\$42
Hardness	WS5200	\$35	OS5200	\$35	NS5200	\$42
pH	WS5500	\$35	OS5500	\$35	NS5500	\$42
Solids: [TDS, TS and TSS]	WS5800	\$35	OS5800	\$35	NS5800	\$42
Complete WS Inorganic Set	WS0002	\$760	OS0002	\$760	NS0002	\$912
STATE SPECIFIC STANDARDS						
Ohio Fluoride	WS5400	\$30	OS5400	\$30	NS5400	\$36
Description	Catalog #	Price	Catalog #	Price	Catalog #	Price
Organic Disinfection By-Products	WS6800	\$50	OS6800	\$50	NS6800	\$60
Chloral Hydrate	WS6900	\$50	OS6900	\$50	NS6900	\$60
Organochlorine Pesticides	WS7000	\$65	OS7000	\$65	NS7000	\$78
Pesticides II [Chlordane]	WS7100	\$50	OS7100	\$50	NS7100	\$60
Pesticides III [Toxaphene]	WS7200	\$50	OS7200	\$50	NS7200	\$60
Carbamates	WS7400	\$65	OS7400	\$65	NS7400	\$78
PCBs	WS7500	\$65	OS7500	\$65	NS7500	\$78
Herbicides I	WS8500	\$65	OS8500	\$65	NS8500	\$78
Herbicides II	WS8700	\$65	OS8700	\$65	NS8700	\$78
Regulated Volatiles	WS9000	\$70	OS9000	\$70	NS9000	\$84
Unregulated Volatiles	WS9100	\$70	OS9100	\$70	NS9100	\$84
EDB/DBCP	WS9200	\$50	OS9200	\$50	NS9200	\$60
Trihalomethanes	WS9300	\$50	OS9300	\$50	NS9300	\$60
Semivolatiles	WS9500	\$120	OS9500	\$120	NS9500	\$144
STATE SPECIFIC STANDARDS						
Gasoline Additives	WS6600	\$90	OS6600	\$90	NS6600	\$108

* All Set Prices Include a 5% Discount. @Complete Set Price Includes a 10% Discount.



Microbiology Standards Specifications and Pricing

WP COLIFORM Presence/Absence

Sample contains two lyophilized samples to be analyzed for Fecal and/or Total Coliforms, one positive one negative.

WP FECAL/TOTAL COLIFORM

One lyophilized sample to be used for quantitative methods for Fecal and/or Total Coliforms, as required by EPA, NELAC and state specific criteria.

WP ENTEROCOCCI

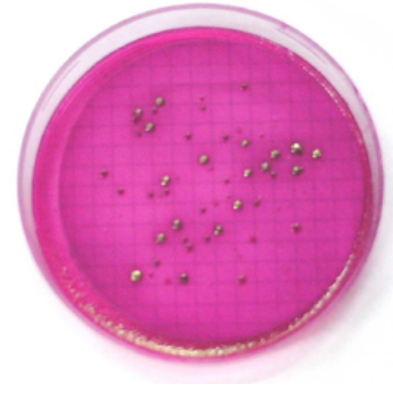
One lyophilized sample to be used for quantitative methods for Enterococci, as required by EPA, NELAC and state specific criteria.

WS FECAL/TOTAL COLIFORM

Ten lyophilized samples to be analyzed for Fecal and Total Coliforms, as required by EPA, NELAC and state specific criteria. For use with all presence/absence methods including Membrane Filter (MF) and Most Probable Number (MPN), Colilert, Colisure, and chromomeric/fluorogenic methods.

WS STANDARD PLATE COUNT

One lyophilized sample to be analyzed for Standard Plate Count, as required by EPA, NELAC and state specific criteria. For use with Standard Method 9215B-Pour Plate.



BenchMark PT Standards

Proficiency Testing (PT) standards are used to demonstrate compliance with EPA, NELAC or state specific requirements for obtaining and maintaining laboratory accreditation. Order PT standards as part of your laboratory's certification process. Although PT standards can be ordered at any time, each study is 45 day long and a new study starts each month.

On Target InstaCheck Standards

On Target InstaCheck standards are used by a laboratory as part of a routine Quality Control (QC) program. These standards should be used to verify the laboratory is in compliance with customer or regulatory data quality objectives. They are supplied with certified values and acceptance limits for immediate feedback on laboratory data quality.

PT NOW Quick Response Standards

PT NOW Quick Response Standards are designed for laboratories that need to quickly demonstrate compliance with a PT requirement, complete a corrective action or add an analyte to their scope of accreditation. Order the samples today and they will arrive tomorrow. Then your results will be faxed to you and the agency of your choice, within 24 hours of when we receive your results.

Water Pollution (WP) Microbiology

Description	BenchMark PT Standards		On Target InstaCheck Standards		PT NOW Quick Response Standards	
	Catalog #	Price	Catalog #	Price	Catalog #	Price
Total/Fecal Coliform Presence/Absence	WP0200	\$80	OP0200	\$80	NP0200	\$96
Total/Fecal Coliform Colony Count	WP0300	\$80	OP0200	\$80	NP0200	\$96
Enterococci Colony Count	WP0500	\$80	OP0800	\$80	NP0800	\$96

Water Supply (WS) Microbiology

Description	BenchMark PT Standards		On Target InstaCheck Standards		PT NOW Quick Response Standards	
	Catalog #	Price	Catalog #	Price	Catalog #	Price
Total/Fecal Coliform Presence/Absence (set of ten)	WS0400	\$130	OS0400	\$130	NS0400	\$156
Heterotrophic Plate Count	WS0600	\$80	OS0600	\$80	NS0600	\$96



Solid Waste (Soil) Standards Specifications

All solid waste standards are provided as a ready to use whole volume 55.0 gram sample, unless otherwise specified. All standards are compliant with EPA, NELAC and state specific criteria where applicable.

SW TRACE METALS

Sample contains Ag, Al, As, B, Ba, Be, Ca, Cd, Co, Cr, Cu, Fe, Hg, K, Mg, Mn, Mo, Na, Ni, Pb, Sb, Se, Sn, Sr, Ti, Tl, V and Zn all within the EPA, NELAC and state specific certification range of 1.0 - 50,000 mg/kg.

SW CYANIDE

Sample contains total cyanide within the certification range of 25.0 – 500 mg/kg.

SW CHROMIUM VI

Sample contains Chromium IV (Cr⁶⁺) within the certification range of 40.0- 300 mg/kg.

SW pH/CORROSIVITY

Sample contains pH/Corrosivity within the certification range of 4.0- 10.0 S.U..

SW PESTICIDES

Sample contains a majority of the analytes listed. Concentration ranges are from 5.0 - 500 ug/kg. For use with EPA methods 608, 8080 and 8081.

Aldrin	Endosulfan I
α-BHC	Endosulfan II
β-BHC	Endosulfan Sulfate
δ-BHC	Endrin
γ-BHC (Lindane)	Endrin aldehyde
4,4'-DDD	Heptachlor
4,4'-DDE	Heptachlor epoxide
4,4'-DDT	Methoxychlor
Dieldrin	

SW CHLORDANE

Sample contains Chlordane (technical) within the certification range of 100 - 500 ug/kg. For use with EPA methods 608, 8080 and 8081.

SW TOXAPHENE

Sample contains Toxaphene (total) within the certification range of 100 - 500 ug/kg. For use with EPA methods 608, 8080 and 8081.

SW PCBs

Sample contains a single Aroclor chosen at random from 1016, 1221, 1232, 1242, 1248, 1254 and 1260 within the certification range of 500 – 50,000 ug/kg. For use with EPA methods 8080 and 8082.

SW PAHs

Sample contains a majority of the analytes listed. Concentration ranges are from 10.0 – 5000 ug/kg. For use with EPA HPLC method 8310.

Acenaphthene	Chrysene
Acenaphthylene	Dibenzo(a,h)anthracene
Anthracene	Fluoranthene
Benzo(a)anthracene	Fluorene
Benzo(b)fluoranthene	Indeno(1,2,3-cd)pyrene
Benzo(k)fluoranthene	Naphthylene
Benzo(g,h,i)perylene	Phenanthrene
Benzo(a)pyrene	Pyrene

SW HERBICIDES

Sample contains a majority of the analytes listed. Concentration ranges are from 5.0 - 500 ug/kg. For use with EPA methods 8041 and 8050/8051.

Dalapon	2,4-DB
Dicamba	MCP
Dinoseb	Pentachlorophenol
Disulfoton	2,4,5-T
2,4-D	2,4,5-TP (Silvex)

SW VOLATILES

Sample contains a majority of the analytes listed. Concentration ranges are from 20.0 - 200 ug/kg. For use with EPA methods 8010/8020/8021, 8240 and 8260.

Benzene	1,2-Dichloroethane
Bromodichloromethane	Ethylbenzene
Bromoform	Methylene chloride
Carbon tetrachloride	4-Methyl-2-pentanone
Chlorobenzene	1,1,1,2-Tetrachloroethane
Chlorodibromomethane	1,1,2,2-Tetrachloroethane
Chloroform	Tetrachloroethene
1,2-Dichlorobenzene	Toluene
1,3-Dichlorobenzene	1,1,1-Trichloroethane
1,4-Dichlorobenzene	Trichloroethene
1,1-Dichloroethane	Xylenes, total

SW SEMIVOLATILES

Sample contains a majority of the analytes listed. Concentration ranges are from 500 – 16,000 ug/kg. For EPA method 8270.

Acenaphthene	2,4-Dinitrotoluene
Acenaphthylene	2,6-Dinitrotoluene
Anthracene	Di-n-octylphthalate
Benzo(a)anthracene	Fluoranthene
Benzo(a)pyrene	Fuorene
Benzo(b)fluoranthene	Hexachlorobenzene
Benzo(g,h,i)perylene	Hexachlorobutadiene
Benzo(k)fluoranthene	Hexachlorocyclopentadiene
bis(2-Chloroethoxy)methane	Hexachloroethane
bis(2-Chloroisopropyl)ether	Indeno(1,2,3-cd)pyrene
bis(2-Ethylhexyl)phthalate	Isophorone
4-Bromophenylphenylether	2-Methyl-4,6-dinitrophenol
Butylbenzylphthalate	2-Methylphenol
2-Chlorophenol	Naphthalene
4-Chloro-3-methylphenol	Nitrobenzene
2-Chloronaphthalene	2-Nitrophenol
4-Chlorophenylphenylether	4-Nitrophenol
Chrysene	N-Nitroso-di-n-propylamine
Dibenzo(a,h)anthracene	Pentachlorophenol
Dibenzofuran	Phenanthrene
2,4-Dichlorophenol	Phenol

Diethyl phthalate	Pyrene
Dimethylphthalate	1,2,4-Trichlorobenzene
Di-n-butylphthalate	2,4,5-Trichlorophenol
2,4-Dimethylphenol	2,4,6-Trichlorophenol
2,4-Dinitrophenol	

"We are pleased to formally recognize the ASI performance evaluation program as an acceptable program in which A2LA-accredited laboratories may participate in order to meet solid/hazardous waste proficiency testing requirements for accreditation"

– Peter S. Unger
President
American Association for
Laboratory Accreditation

STATE SPECIFIC SOIL STANDARDS

WASHINGTON STATE EPH

Sample was designed in cooperation with the State of Washington Department of Ecology. It is prepared to meet the requirements for their Toxic Cleanup Program for Extractable Petroleum Hydrocarbons.

WASHINGTON STATE VPH

Sample was designed in cooperation with the State of Washington Department of Ecology. It is prepared to meet the requirements for their Toxic Cleanup Program for Volatile Petroleum Hydrocarbons.

UST STANDARDS IN SOIL

SW DIESEL RANGE ORGANICS

Sample contains Diesel Range Organics (DRO) within the concentration range of 100 - 5000 mg/kg. For use with EPA method 8015M and other GC methods.

SW GASOLINE RANGE ORGANICS

Sample contains Gasoline Range Organics (GRO) within the concentration range of 100 - 2500 ug/kg. For use with EPA method 8015M and other GC methods.

SW PETROLEUM HYDROCARBON

Sample contains Total Recoverable Petroleum Hydrocarbons (TRPH) within the concentration range of 250 - 2500 mg/kg. For use with gravimetric and IR methods.

WP AROMATIC VOLATILES

Sample contains BTEX + MTBE within concentration range of 1.0 -100 ug/kg. For use with EPA method 8020 and 8021.

Solid Waste (Soil) Standards Pricing

BenchMark PT Standards

Proficiency Testing (PT) standards are used to demonstrate compliance with EPA, NELAC or state specific requirements for obtaining and maintaining laboratory accreditation. Order PT standards as part of your laboratory's certification process. Although PT standards can be ordered at any time, each study is 60 day long and a new study starts quarterly.

On Target InstaCheck Standards

On Target InstaCheck standards are used by a laboratory as part of a routine Quality Control (QC) program. These standards should be used to verify the laboratory is in compliance with customer or regulatory data quality objectives. They are supplied with certified values and acceptance limits for immediate feedback on laboratory data quality.

PT NOW Quick Response Standards

PT NOW Quick Response Standards are designed for laboratories that need to quickly demonstrate compliance with a PT requirement, complete a corrective action or add an analyte to their scope of accreditation. Order the samples today and they will arrive tomorrow. Then your results will be faxed to you and the agency of your choice, within 24 hours of when we receive your results.

Description	BenchMark PT Standards		On Target InstaCheck Standards		PT NOW Quick Response Standards	
	Catalog #	Price	Catalog #	Price	Catalog #	Price
Trace Metals in soil	SW1000	\$140	OW1000	\$140	NW1000	\$168
Cyanide in soil	SW2300	\$100	OW2300	\$100	NW2300	\$120
Chromium VI [Cr ⁶⁺] in soil	SW2500	\$95	OW2500	\$95	NW2500	\$114
pH/Corrosivity in soil	SW5500	\$120	OW5500	\$120	NW5500	\$144
Pesticides in soil	SW7000	\$120	OW7000	\$120	NW7000	\$144
Chlordane in soil	SW7100	\$120	OW7100	\$120	NW7100	\$144
Toxaphene in soil	SW7200	\$120	OW7200	\$120	NW7200	\$144
PCBs in soil	SW7500	\$120	OW7500	\$120	NW7500	\$144
PAHs in soil	SW8000	\$120	OW8000	\$120	NW8000	\$144
Herbicides in soil	SW8500	\$120	OW8500	\$120	NW8500	\$144
Volatiles in soil	SW9000	\$150	OW9000	\$150	NW9000	\$180
Semivolatiles in soil	SW9500	\$200	OW9500	\$200	NW9500	\$240
STATE SPECIFIC PT SAMPLES						
Washington State EPH	SW6150	\$120	OW6150	\$120	NW6150	\$144
Washington State VPH	SW6250	\$120	OW6250	\$120	NW6250	\$144
UNDERGROUND STORAGE TANK STANDARDS						
Diesel Range Organics (DRO)	SW6100	\$120	OW6100	\$120	NW6100	\$144
Gasoline Range Organics (GRO)	SW6200	\$120	OW6200	\$120	NW6200	\$144
Total Petroleum Hydrocarbons (TRPH)	SW6300	\$120	OW6300	\$120	NW6300	\$144
Aromatic Volatiles [BTEX] in soil	SW6500	\$120	OW6500	\$120	NW6500	\$144

Laboratory Control Standards

1000 mg/L Calibration/Check Standards

asi 1000 mg/L standards can be used for primary calibration or to prepare second source check standards. They are traceable to NIST Standard Reference Materials, where available and are guaranteed to be stable for one year.

Parameter	Matrix	500 ml Bottle		1000 ml Bottle	
		Catalog #	Price	Catalog #	Price
Ammonia as NH ₃	H ₂ O	LC4060	\$ 40	LC4050	\$ 80
Ammonia as N	H ₂ O	LC4110	\$ 40	LC4100	\$ 80
Bromate	H ₂ O	LC3510	\$ 40	LC3500	\$ 80
Bromide	H ₂ O	LC3560	\$ 40	LC3550	\$ 80
Chlorate	H ₂ O	LC3610	\$ 40	LC3600	\$ 80
Chloride	H ₂ O	LC5110	\$ 40	LC5100	\$ 80
Chlorite	H ₂ O	LC3660	\$ 40	LC3650	\$ 80
Free Cyanide	H ₂ O/NaOH	LC2310	\$ 40	LC2300	\$ 80
Complex Cyanide	H ₂ O/NaOH	LC2360	\$ 40	LC2350	\$ 80
Fluoride	H ₂ O	LC5160	\$ 40	LC5150	\$ 80
Nitrate as NO ₃	H ₂ O	LC4190	\$ 40	LC4180	\$ 80
Nitrate as N	H ₂ O	LC4160	\$ 40	LC4150	\$ 80
Nitrite as N	H ₂ O	LC4210	\$ 40	LC4200	\$ 80
Perchlorate	H ₂ O	LC3710	\$ 40	LC3700	\$ 80
Phosphate as PO ₄	H ₂ O	LC4290	\$ 40	LC4280	\$ 80
Phosphate a P	H ₂ O	LC4260	\$ 40	LC4250	\$ 80
Sulfate as SO ₄	H ₂ O	LC5290	\$ 40	LC5280	\$ 80
Sulfate as S	H ₂ O	LCS5260	\$ 40	LC5250	\$ 80



Chemical Oxygen Demand (COD)

One 1,000 mg/L standard preserved with HCl in a amber glass bottle.

Cat. # LC3300 (1000 ml bottle) \$ 80
Cat. # LC3310 (500 ml bottle) \$ 40

Hardness

Choose either a 200 mg/L or 1,000 mg/L standard preserved with HNO₃ in either a 500 mL or 1 L size

Cat # LC5200 (200 mg/1 1 L) \$80
Cat # LC5210 (1000 mg/1 1 L) \$80
Cat # LC5220 (1000 mg/1 500 ml) \$40

MBAS/LAS Surfactants

One 10 mL flame-sealed ampule containing 1,000 mg/L LAS H₂SO₄ preserved for use with EPA method 425.1.
Cat. # LC2610 \$ 50

Sulfide

One 20 mL flame-sealed ampule with 1,000 mg/L sulfide preserved with NaOH and zinc acetate.
Cat. # LC2850 \$ 50

Total Kjeldahl Nitrogen (TKN)

One 1,000 mg/L standard preserved with HCl in a HDPE bottle.
Cat. # LC4300 (1000 ml bottle) \$ 80
Cat. # LC4310 (500 ml bottle) \$ 40

Contact Us



Whenever you want to inquire about products, check prices or place an order, an **asi** customer service representative is standing by. By phone, fax or email, if you've got questions, comments or suggestions, feel free to contact us any time, before or after a purchase. **asi** business hours are from 8:00 am to 6:00 pm EST.

Telephone: (304) 422-4274
(800) AUDIT-44 [283-4844]

Fax: (304) 422-4761

Electronic mail:

Customer Service: csr@asipt.com

General Info: info@asipt.com

Tech Support: tsr@asipt.com

Webmaster: webmaster@asipt.com

"ASI's double-blind program is the best way for a laboratory to benchmark its performance against the best. It is also the best way to demonstrate to our clients that there is a quality difference between laboratories."

– David Turriff, Ph.D.
President
En Chem, Inc.

Conventional mail:
Analytical Standards, Incorporated
6331 Emerson Avenue
P.O. Box 4060
Parkersburg, West Virginia 26104-4060

Don't forget to visit our new home on the internet: www.asipt.com

100% CUSTOMER SATISFACTION

asi offers the highest quality products and the best customer service in the industry. We're so sure of this, we guarantee it! All **asi** products and product lines are covered by our 100% Customer Satisfaction Guarantee. If, for any reason, you are not satisfied with an **asi** sample(s), **you** have the choice of a full refund or a replacement sample at no charge.

The **asi** TOTAL PEACE OF MIND GUARANTEE

With all products from **asi**, you get total peace of mind with our client satisfaction guarantees.

- ✓ 100% Customer Satisfaction
- ✓ 10% Lower Price Guarantee

We Guarantee To Beat Any Quoted Price By At Least 10%.

iData Online Data Entry System

Welcome to the future.....iData is Here!!

iData is the most revolutionary state-of-the-art system in the environmental industry today and it's available exclusively from asi.

Our system features:

- ✓ Eliminates your paperwork nightmare and the possibility of transcription errors.
- ✓ Last Minute Reporting – Online Data Entry will be available until Midnight on the Study Close Date.
- ✓ E-Mail Reminders and Confirmations – If you are registered for Online Data Entry, **asi** will automatically send you a reminder that the Study Close Date is fast approaching if your data has not been submitted as well as an e-mail confirmation when it is submitted.
- ✓ Saves you time and money by allowing for a speedier data entry process

Visit the *iData* site at www.asipt.com



Order Information

To place an order with **asi**, just use one of the simple steps outlined below:

- ① By Fax: Print the appropriate participation form from our web site (www.asipt.com), fill it out completely and fax it to **asi** at (304) 422-4274
- ② By Mail: Print the appropriate participation form from our web site (www.asipt.com), fill it out completely and mail it to **asi** at 6331 Emerson Avenue Parkersburg, WV 26101
- ③ Simply call **asi** at (304) 422-4274 or (800) audit-44 [283-4844]



Shipping: **asi** uses Federal Express for quick and reliable delivery, unless otherwise specified.

Credit Cards: **asi** accepts American Express, Master Card and Visa



Terms: **asi**'s terms are net 30 days. All shipping charges are prepaid and added to invoice, unless other arrangements are made.

Why Choose asi?

- ✓ **Quality:** **asi** offers the highest quality performance evaluation standards available anywhere.....period!
- ✓ **Selection:** **asi** has one of the most complete lines of proficiency testing (PT) samples, both inorganic and organic. We offer complete lines for drinking water (WS), waste water (WP) and solid waste (soil). Need a PT sample and don't see it listed, then check out our web site at www.asipt.com for a complete listing of what we offer.
- ✓ **Service:** **asi**'s customer service representatives are the friendliest in the industry, always here to serve you!
- ✓ **Support:** **asi** offers dedicated technical support representatives, always willing to assist and to answer any technical question!
- ✓ **Experience:** **asi** has over fifteen years experience running proficiency testing programs!
- ✓ **Price:** All **asi** samples are provided at a reasonable price so you don't have to pay too much anymore.
- ✓ **Online 24-7:** **asi**'s web site at www.asipt.com provides the most revolutionary state-of-the-art system in the environmental industry today!



Analytical Standards, Inc.
 6331 Emerson Avenue
 P.O. Box 4060
 Parkersburg, West Virginia 26101-4060

Bulk Rate
 Third Class
 Postage
PAID

(304) 422-4274
 Fax: (304) 422-4761
www.asipt.com
info@asipt.com

Source Code
F0706